



@stampseeds



@stampseeds



@stampseeds





- Family owned and operated seed farm and retail, established 1979
 - 34 years growing seed
- 13 full time people + summer students and seasonal
- Seed sales across Canada
- SeedNet member
- 9000 ac of seed production
 - 80% irrigated
 - Breeder, Select, Foundation, Registered, & Certified seed



HRS Wheat

- **AAC Viewfield – S for smut so seed treat, good for sprouting, Great yield!, longer season, protein can be lower**
- **CDC Landmark VB – early to medium season, stood better than Viewfield, protein on check, VG for sprouting, midge agreement**
- **AAC Redberry – Early!!, low disease risk, taller & some lodging risk**
- AAC Elie – top seller in past, great disease package
- AAC Brandon - most acres in W Canada



Note: Not replicated														
HRSW Trials with Weathering	weight lbs	bu/ac	moisture	moisture corrected to 14.5%	bu/ac moisture corrected	% of lowest	g/hl	Falling number	Protein	Grade	Notes	Greg Notes		
Viewfield West	1040	78.0	15.8	866.7	72.5	100%	352	302	14.2%	3	FRST, Mildew	Viewfield West	Field Edge... Viewfield likes high fertility, delayed fertility and fungicides and has good sprout rating	
Landmark VB	1040	87.0	15.9	1051.9	79.3	108%	362	340	14.9%	3	FRST, Mildew	Landmark VB	Stands the best, very good for sprouting	
Elle	1130	84.0	16.0	1021.0	76.1	105%	361	279	14.2%	3	FRST, Mildew	Elle		
Rodberry	1240	90.0	16.4	1096.0	80.2	110%	353	309	14.2%	3	FRST, Mildew	Rodberry	Early	
ST Remy (CPS)	1240	85.5	15.7	1052.9	79.0	109%	365	303	13.6%	3	FRST, Mildew	ST Remy (CPS)		
Rudhat	1200	90.0	16.0	1087.5	80.6	110%	365	377	14.4%	3	FRST, Mildew	Rudhat	Fall 2020 launch, low (low accumulation from F&B, maturity medium to early	
Leroy VB	1400	100.0	16.1	1260.9	86.8	120%	357	334	14.2%	3	FRST, Mildew	Leroy VB	Fall 2020 launch, Wheatland VB will be similar to Leroy VB, stands well, yields great!	
Brandon	1130	84.0	16.2	1061.5	75.2	104%	367	320	14.2%	3	FRST, Mildew	Brandon		
Mix of all varieties	1380	100.5	16.1	1242.9	80.2	109%	358	341	13.8%	3	FRST, Mildew	Mix of all varieties	The blend of all always seems to do well!	
Viewfield East	1240	90.0	15.6	1151.6	86.4	119%	352	302	14.2%	3	FRST, Mildew	Viewfield East		

Seeded May 21, 2019

Target rate: 60 plants per square foot = 127-128 bu/ac use rate

Fungicides: None - Viewfield responds well with yield to fungicide as that may have helped it

Fertility: 310 lbs 40-0-0 in MIB, 80 lbs 11-52 with the seed

PKB not used but standability was better than expected

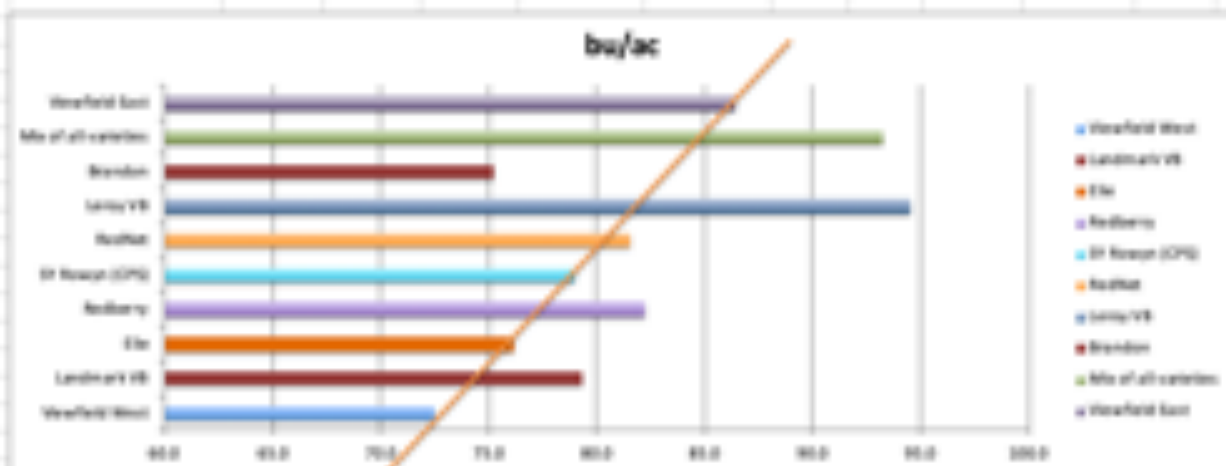
303 g/hl is roughly 60 bu per bu

Plots went through snow so they were flattened

Fields tumbled down from east to west

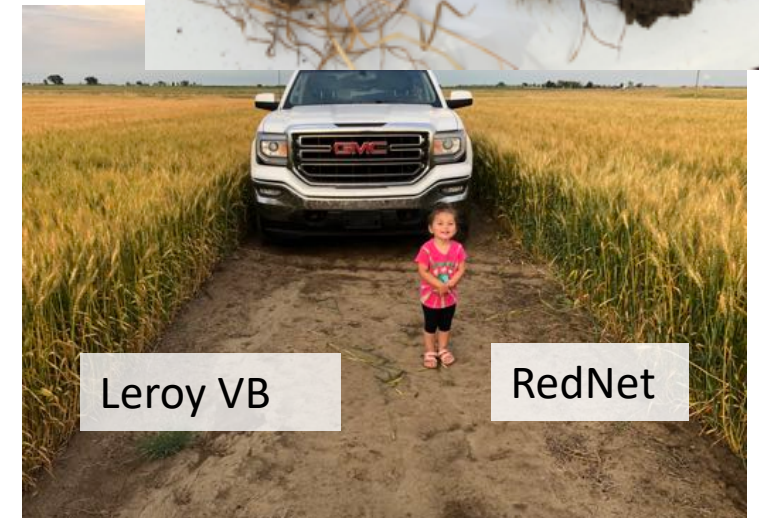
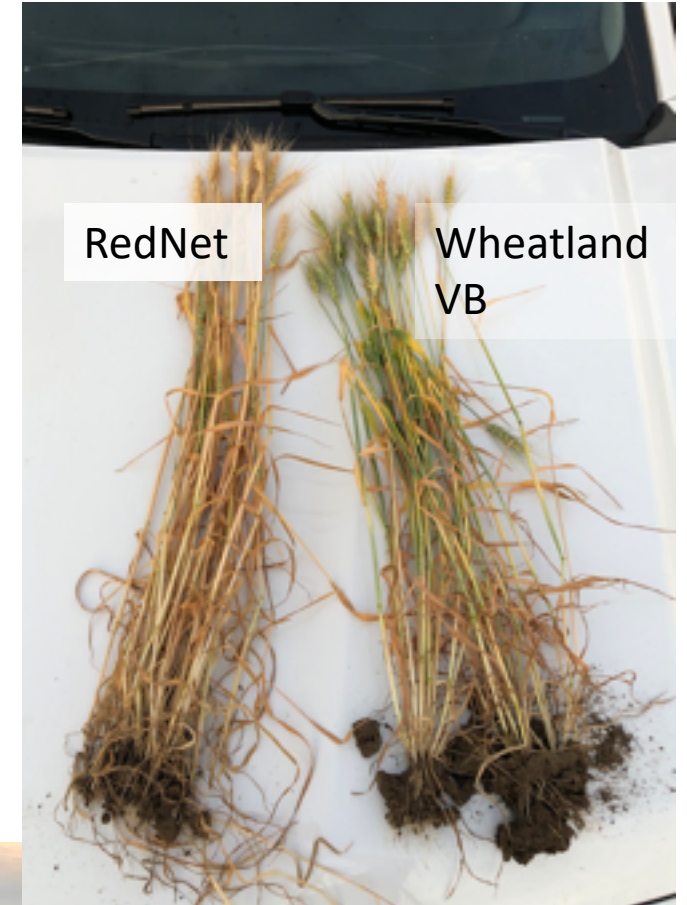
The line crossing the chart connects the two viewfield plots allowing you to see the final trend

Thanks to F&B Advisor for grading the sample 603-485-2727



Fall 2020 New HRS Wheat

- AAC Leroy VB
 - MR for FHB, short / early
 - Early - medium season
 - Replacement for Elie / Viewfield / Landmark?
- AAC Wheatland VB
 - Intermediate for FHB
 - Medium season
 - Replacement for Brandon / Viewfield / Landmark?
- RedNet
 - Low don accumulation, high falling numbers
 - Taller vs some varieties by 4-6"
 - Early - medium maturity





GP Wheat – KWS Alderon

- Very short, high yielding European spring wheat in the General Purpose class.
- Use for feed, ethanol, US spring wheat market
- 20-30 % higher yields than HRSW
- Great disease package
- Very long season
- Lower test weight is a risk with KWS Alderon (thinking more tied to frost)
- Low protein like a soft wheat
- Resistant to leaf rust and moderately resistant to stripe rust and stem rust



Soft Wheat

- AAC Awesome VB
 - SP class – missed milling quality
 - yields high
 - taller so may have more lodging risk vs others
 - Top for grain yield & silage
- Paramount VB – Sadash plus yield
- PGR on irrigation – pic has 40 plants target



CPS Wheat

- SY Rowyn – 10%+- yield advantage over HRSW
 - Short stature, MR for FHB and Stripe Rust, S for Bunt
 - Acts like a HRSW in field, does respond to high management
 - Some using as a feed with good protein content
 - High fertility / moisture may want PGR
 - P+H / Patterson program at slightly less than HRSW (some equal farmers say)
 - based on 13%+ protein
- **CDC Terrain - New**
 - Slightly taller vs Penhold but stands well
 - 4% yield gain
 - VG sprouting rating



SY Rowyn on Irrigation 2018



Grade	2 13.5	2 13.5	2 13.5
Price	\$ 7.50	\$ 7.50	\$ 7.50
Discount to HRSW	\$ -	\$ 0.20	\$ 0.20
Yield Gain	0%	15%	10%
Yield per ac	100	115	110
Gross Margin / ac	\$ 750.00	\$ 839.50	\$ 803.00
Gain per ac with SY Rowyn =		\$ 89.50	\$ 53.00

Dry Land Southern AB			
Stamp Seeds	CWRS	SY Rowyn CPS	SY Rowyn CPS
Grade	2 13.5	2 13.5	2 13.5
Price	\$ 7.50	\$ 7.50	\$ 7.50
Discount to HRSW	\$ -	\$ 0.20	\$ 0.20
Yield Gain	0%	15%	10%
Yield per ac	35	40.25	38.5
Gross Margin / ac	\$ 262.50	\$ 293.83	\$ 281.05
Gain per ac with SY Rowyn =		\$ 31.33	\$ 18.55

Durum Wheat

- AAC Succeed VB
 - Big seed size, amazing yields
 - MS for FHB
 - Midge agreement
- CDC Precision
 - Yield, medium height, quality retention (MS for FHB)
- CDC Alloy
 - Yield, medium height, quality retention (MS for FHB)



Flax

Brown Flax

- AAC Prairie Sunshine – Bethune parentage, long season, stood well in 2017
- Topaz – VT 50 parentage, medium height and maturity, stood very well in 2017

Yellow flax, slightly lower yields than brown

- CDC Dorado - Early maturity
- CDC Bright – brighter yellow

Treatment

- Insure Pulse on flax
 - Please pre-order
 - Yield gains, more even crop, faster to flower
 - Farm trials = 5+ bu over 2 seasons on dryland farmer trial near Brooks



• Fall 2020

- **Marvelous – brown flax**

Pulses

- AAC Liscard maple pea – small seed size
 - small market, priced better vs yellow
 - yields and stands like a yellow



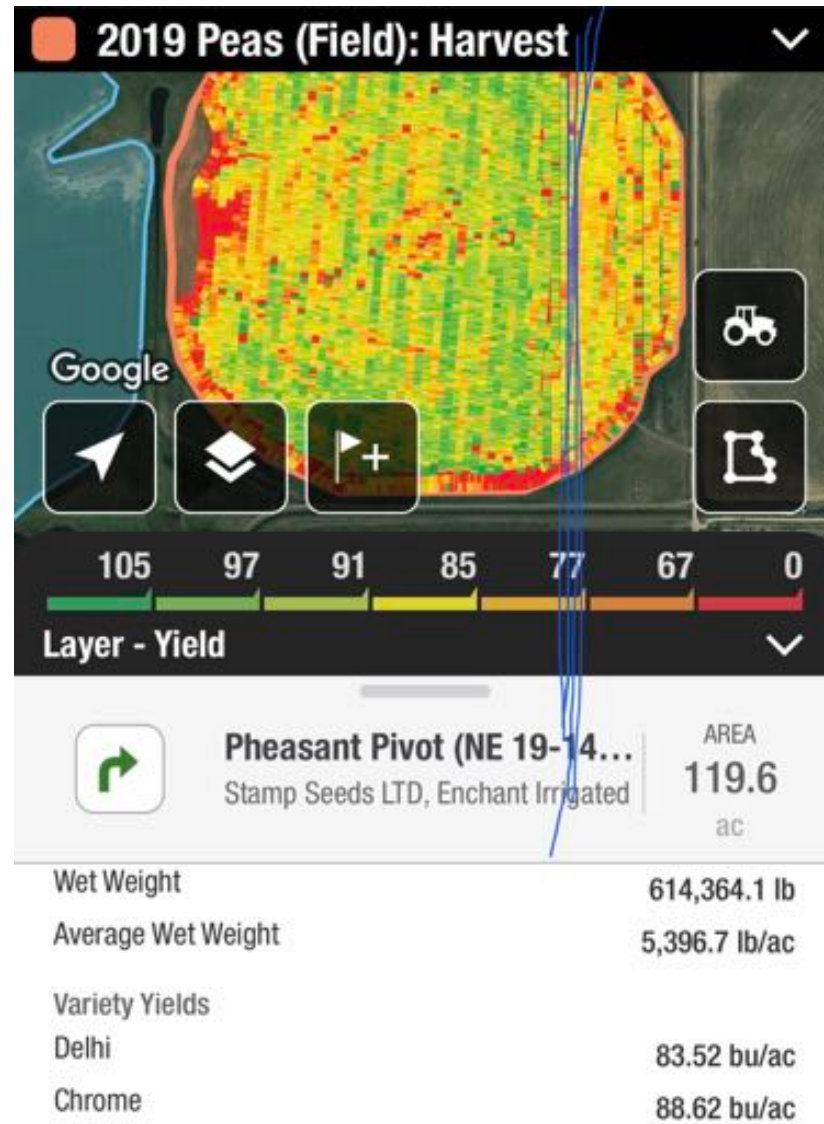
- CDC Greenwater Green pea
 - Market is hot now
 - Future: Blueman – Green pea (fall 2020) DL Seeds
 - More intense green, blocky, smaller, high yield



- CDC Proclaim lentil
 - Small red CL, similar to maxim but higher yield
- Green lentils
 - Greenstar – bringing some in – more grade risk with greens

AAC Chrome - yellow pea

- Beat Lacombe by 5 bu on irrigation, top yield on our farm 2 years in a row.
- Medium maturity & seed size
- Pod shatter, seed coat breakage good



Jumbo Yellow Pea

- Abarth – Jumbo yellow
- AAC Delhi – Jumbo yellow (fall 2020 / soft launch fall 2019)
 - Up to 14% over check
 - Seed coat breakage seems good
 - Lodged on us in 2019 on irrigation.



Faba Bean

- FB 9-4 – Large seed size – market premiums
- Snowbird – Medium seed size, Low tannin
 - opportunities in feed / human market – New crop \$?...
- Fabelle – soft launch this year, full launch next
 - Yields up to 10+ % over snowbird – market development now
 - Was told very early this season in trials
 - Medium seed size, tannin, low vicine content.





Fall 2020

- 219-16 Faba bean: – new smaller zero tannin from SeCan, yield like snowbird but 20% less cost to seed and treat it.
- DL Rico – low tannin, low vicine / Con Vicine
 - Prairie Fava contracting it next winter for 2021 crop season

Faba Bean

- Vicki Dutton – FB 9-4 and others 306-441-6699
- LSM Commodities – Tia 306-290-8748
- Seabord – Fabelle or FB 9-4 or Snowbird – Garner 306-565-3934
- AGT Foods – 9-4 and Snowbird - Todd [587-747-0333](tel:587-747-0333)

FABA BEAN

Variety	Type	Overall Yield	Overall Station Years of Testing	Relative Maturity ¹	Plant Height (cm)	Thousand Seed Weight (g)	Flower Colour ²
Varieties tested in the 2018 trials (Yield and agronomic data only directly comparable to Snowbird)							
CDC Snowbird (kg/ha)		5722					
CDC Snowbird 	Zero Tannin	100	54	E	89	478	W
CDC 219-16 NR	Zero Tannin	101	10	E	83	358	W
DL Tesoro NR	Zero Tannin	107	10	M	89	571	W
Fabelle 	Tannin	115+	20	M	94	534	C
Malik NR * NR	FB 9-4	96-	42	M	83	632	C

Hybrid Fall Rye

- Good lodging resistance vs other rye
- Hybrid fall rye cert seed use only
- Can be planted later than winter wheat
- Watch for uneven flowering crop
 - sprayer tracks can increase ergot levels
- Feed use increasing – net returns can work
- Hybrid yields 20-40% advantage over traditional rye
 - Best product under drought stress
- **KWS Daniello – lower ergot risk**
- **ProPower**
 - **Forage & silage yield 10% over other hybrids for forage**
 - **Double cropping with oats behind it**
 - **Utilizing dryland forages better**



Hybrid Fall Rye



Daniello

- July 31st 2019
- Hays AB on Irrigation



Note: Not replicated

Hybrid Fall Rye Trials

	weight lbs	bu/ac	moisture	moisture corrected to 13.2% (the highest plot)	bu/ac moisture corrected	% of lowest	T/W G/H	Falling number	Ergot	Grade
KWS Daniello West	4480	136.0	13.2	4480.0	136.0	106%	348	224	0.25%	3CW RYE
Guttino	4280	129.9	13.2	4280.0	129.9	101%	350	246	0.99%	Sample
KWS Propower	4320	131.1	13.3	4287.5	130.2	102%	355	210	0.60%	Sample
KWS Daniello East	4160	126.3	13.0	4224.0	128.2	100%	350	210	0.31%	3CW RYE

Notes

Ergot & Odd Sprout
Ergot
Ergot
Ergot & Odd Sprout

Greg Notes:

Ergot risk in plots elevated similar to how field edges can have more ergot (Forage specific variety)

Seeded Sept 20 2018

0.8 of a unit per ac (56-65 lbs per ac range in use rate)

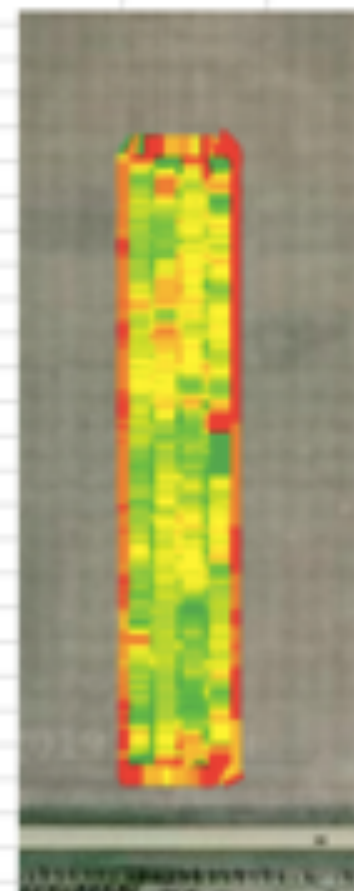
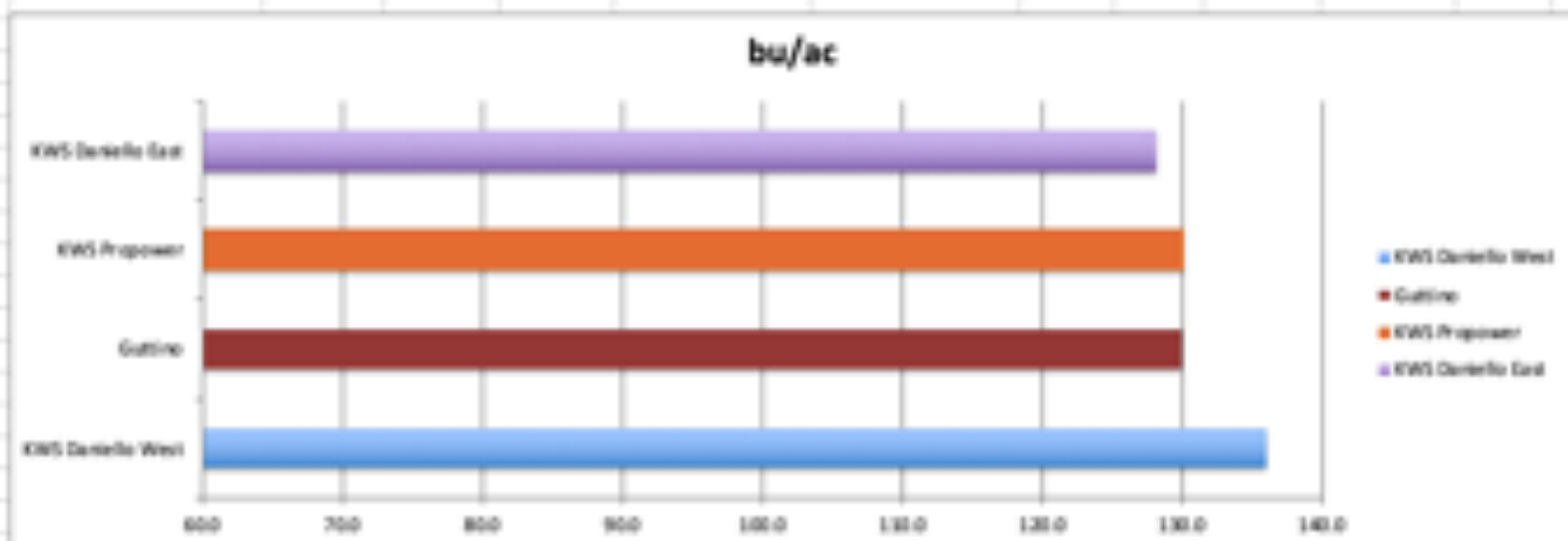
Fungicides: None

Fertility: 350 lbs 46-0-0 Spread on in spring, 80 lbs 11-52 with the seed in fall

PGR not used but standability was better than expected

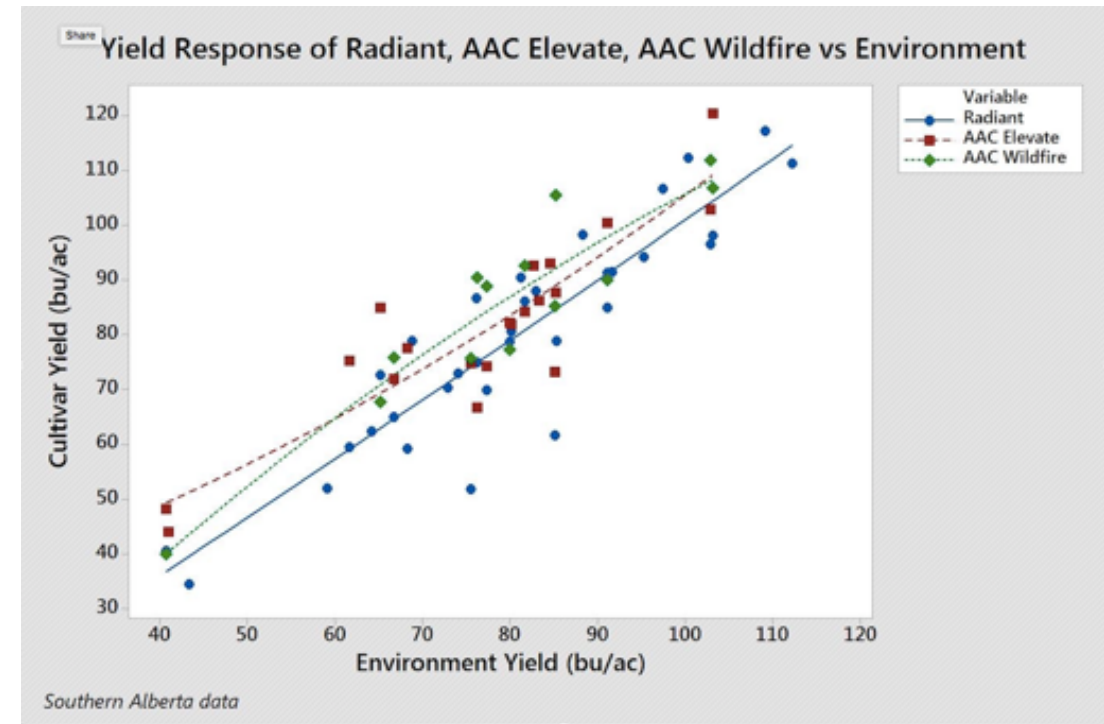
Ergot risk in plots elevated similar to how field edges can have more ergot risk

Thanks to P&H Vulcan for grading



Winter Wheat

- **AAC Wildfire** - Yield, winter hardiness, R for stripe rust, I for FHB, longer season
- AAC Elevate - Yield, drought tolerance
- AAC Gateway - Protein, short stature



Barley

Feed

- CDC Austenson 2 row feed / silage
- AB Cattlelac – New
 - 6 row, smooth awn, 6% higher forage yield vs other barley varieties, great grain yields
 - 18% advantage in yield trial

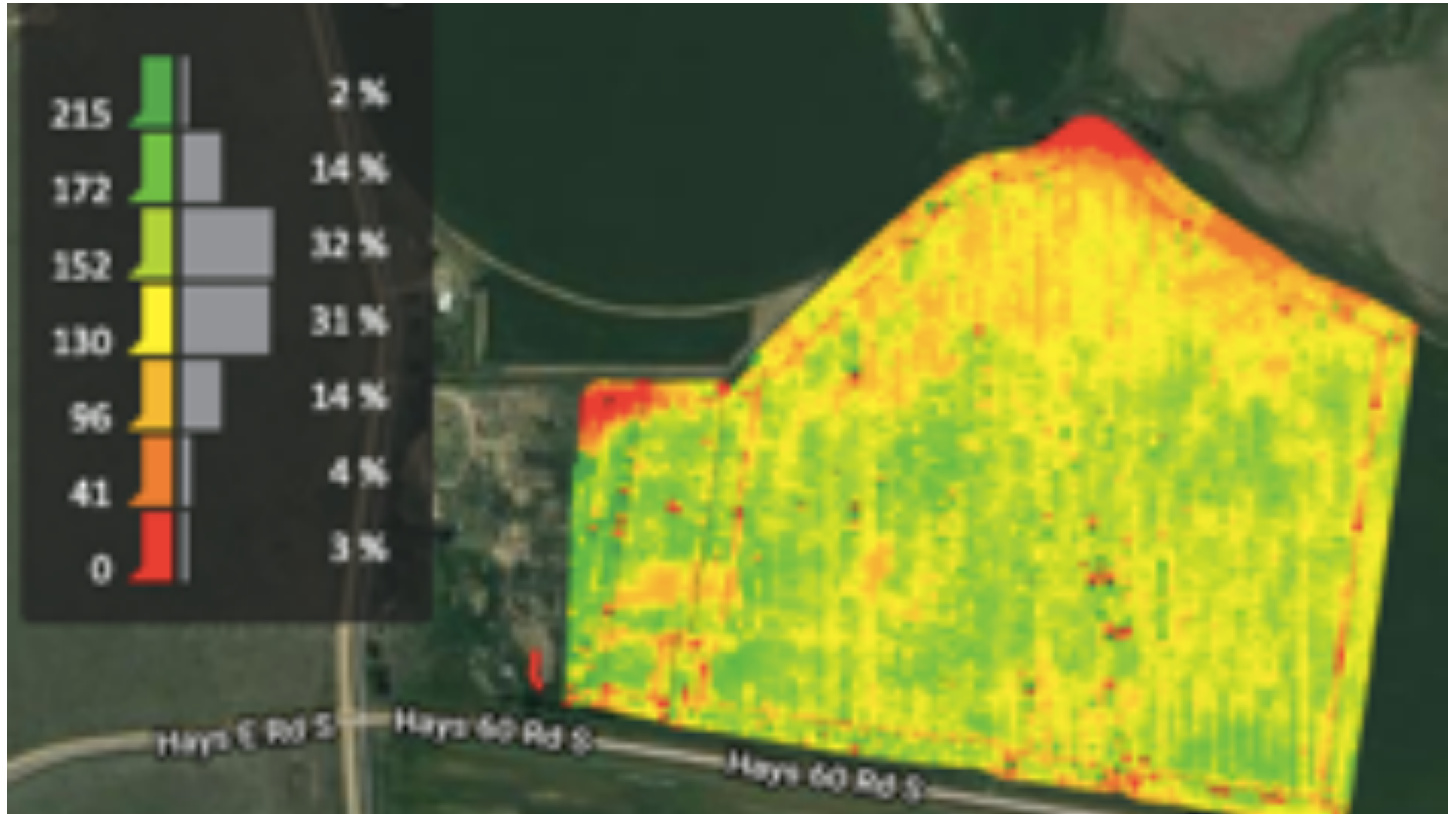


Malt:

- Bill Coors 100 - 2 row malt, early with high yield, stands well, tillers out
- AC Metcalfe – 2 row malt



Bill Coors 100 2 row Malt – AVG 152 bu per ac



An aerial photograph of agricultural fields. The top portion of the image shows several rows of light-brown, harvested crops. The bottom portion shows a large area of green, growing crops. Five parallel blue lines are drawn across the harvested area, each with a text label. The labels are: 'AB Cattlelac 6 row', 'CDC Austenson', 'Bill Coors 100', 'Blend of all 4 varieties', and 'AB Cattlelac 6 row'.

AB Cattlelac 6 row

CDC Austenson

Bill Coors 100

Blend of all 4 varieties

AB Cattlelac 6 row

Note: Not replicated

Barley Trials with Weathering

	bu/ac	moisture	bu/ac moisture corrected	% of lowest	G/hl	Chit	Plump	Pro	Grade
AB Cattielac	126.0	12.4	150.4	167%	291	2.0	92.0%	13.2%	AB Cattielac
CDC Austenson	104.2	12.7	121.4	134%	289	12.3	92.0%	12.7%	CDC Austenson
BC 100 Malt	129.2	16.1	118.7	131%	276	29.3	94.0%	12.5%	BC 100 Malt
Trial Var 1	103.1	16.9	90.3	100%	261	38.4	92.6%	12.8%	Trial Var 1
Blend of All	134.4	13.0	153.0	169%	286	17.1	90.0%	13.0%	Blend of All
AB Cattielac	141.7	12.4	169.1	187%	291	2.0	92.0%	13.2%	AB Cattielac

Greg Notes: All flattened and sat in snow

Stood equal to slightly beter vs Austenson

Very early

Very very early, tough to pickup as is short variety

The blend did well again Mud balls in sample

Seeded May 21 2019

Target rate: 35 plants per square foot = 142-175 lbs per acre use rate

Fungicides: None

Fertility: 350 lbs 46-0-0 in MRB, 80 lbs 11-52 with the seed

PGR not used but standability was better than expected

292 g/hl is roughly 48 lbs per bu

Plots went though snow so they were flattened

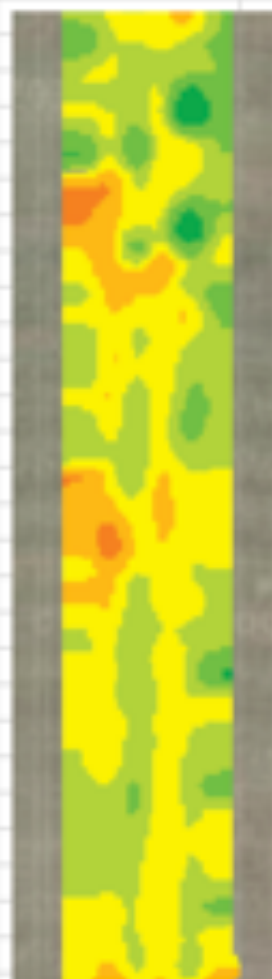
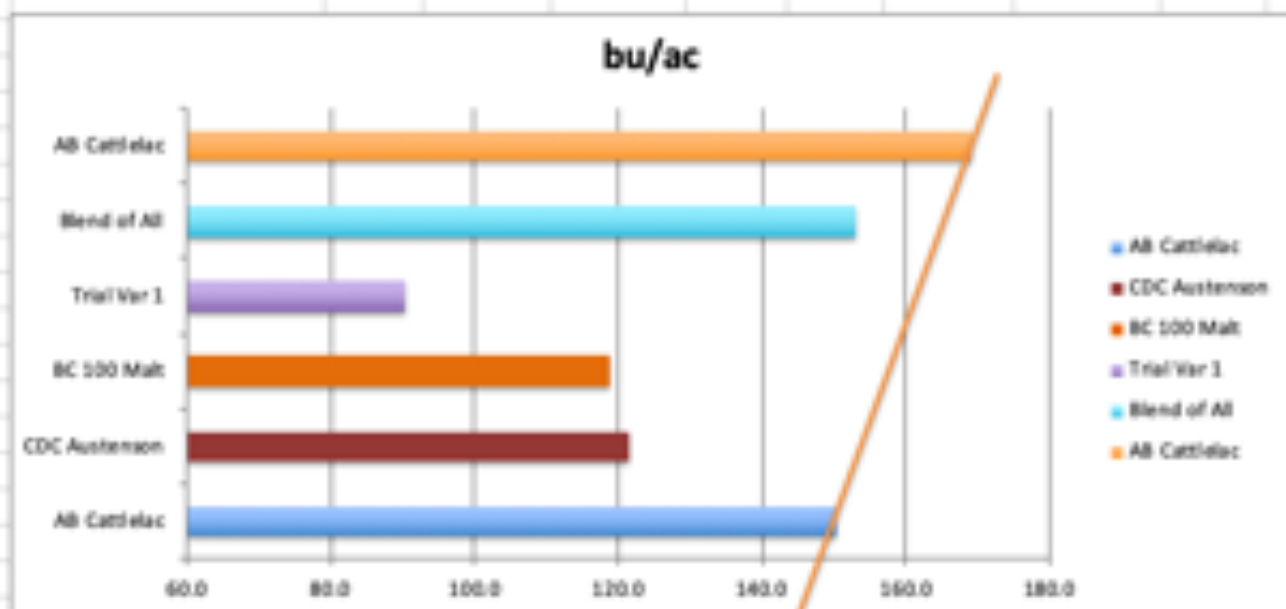
Yields trended down from west to east

The line crossing the chart connects the two AB Cattielac plots allowing you to see the field trend

Thanks to P&H Vulcan for grading the sample 403-485-2727



Stamp Seeds



Stamp Seeds

Winter Barley - KWS Higgins

- 6 row feed or forage
- Stands very good
- One of Europe's most hardy lines
- Winter hardiness will be a concern
 - Seed early vs winter wheat
 - Use seed treatments



Winter Barley - KWS Higgins

July 6 2019													
	lbs 3x3 silage	lbs per ac	Tons per ac	Moisture		Moisture Corrected MT / Acre	Rank	Protein	ADF %	ADF % as fed	TDN %	TDN % as fed	
KWS Daniello Rye West	6.75	32670	14.8	70%	KWS Daniel	14.1	5	7.5%	31.7	9.54	53.4	16.1	
Guttino Rye	7.7	37268	16.9	70%	Guttino Rye	16.0	2	11%	30.29	9.01	62.2	18.5	
KWS Propower Rye	7.7	37268	16.9	66%	KWS Propow	16.7	1	10%	26.31	8.97	59	20.1	
KWS Daniello Rye East	7	33880	15.4	69%	KWS Daniel	14.7	3	13%	33.4	10.3	65.5	20.2	
KWS Higgins Winter Barley (different area)	7.4	35816	16.2	75%	KWS Higgin	14.6	4	13%	21.4	5.36	67.1	16.8	

(barley was not in the same area of the field as the rye plots so not directly comparable)

No fungicides were used in crop. Height was short compared to normal

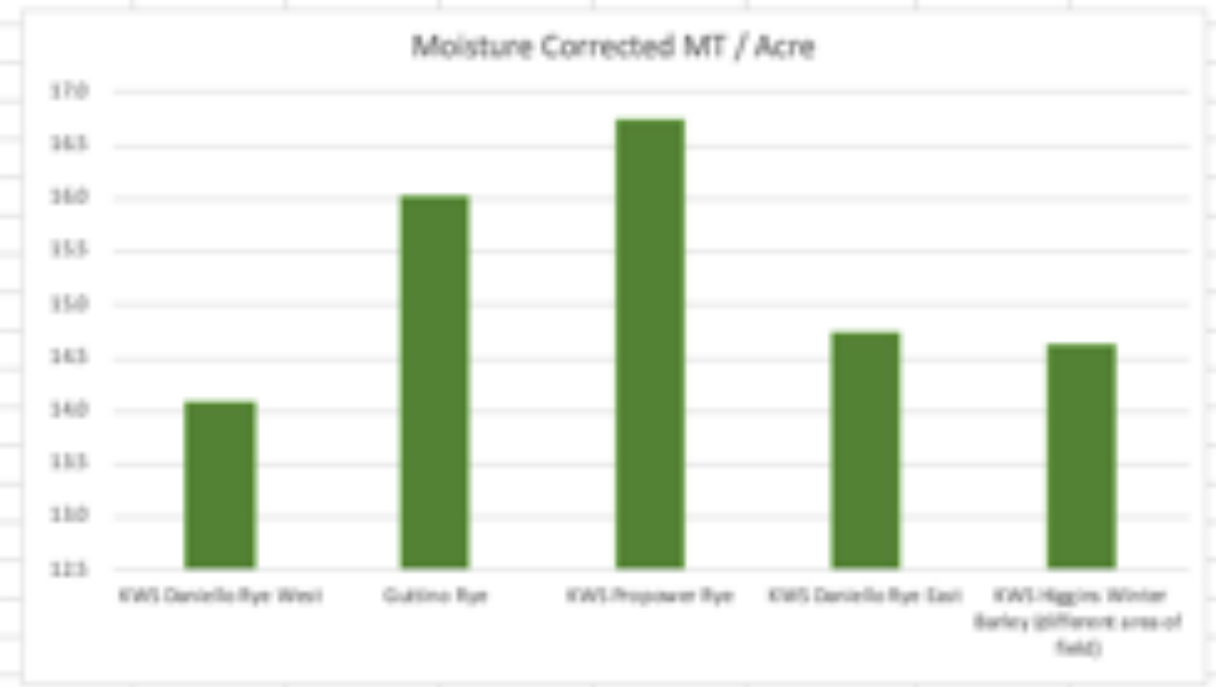
Kosmos left pic, KWS Propower right

July 6 2019 silage date - Seeded Sept 20 2018

1 year of data, non replicated

Propower was the driest and closest to 65% moisture

Field is irrigated but has some limitations for top end yield and variability.



Oat

- **CDC Arborg**

- Top yield
 - Good standability, easy to harvest
 - High plump
 - High beta glucan
 - Milling type but also can be used for forage
-
- Picture on right is on irrigation



Triticale

- Sunray
 - Soft Awn
 - Good for green feed and other forages
 - Early
 - Shorter vs other spring trit
 - Dryland it did very well vs other cereals in 2019
 - Great yields
- Winter triticale
 - New SeedNet variety seeded
 - 1 ac seeded fall 2019



HWSW

- AAC Iceberg – available now
 - Rogers Foods is a buyer & in the past some line co's
 - Resistant to bleaching because of white hue
 - Yield similar to HRSW
 - Decent lodging resistance
 - I for FHB
 - MS for smut = seed treat
 - MS for leaf spot
- AAC Cirrus – Fall 2019?



Corn, Canola, Soybean

- Thunder – Corn and Soybean
 - BrettYoung – Soybean & Canola
 - De Dell – Non RR Corn
-
- Trials – if planning any can organize seed now



Cover crop blends

- Grazing
- Soil health
- Stability from erosion (prior or after specialty crops)
 - forage collards, tame buckwheat, winter wheat
 - Option 2 – 3 items above plus: sunflower, oat, dicon radish
- Blend Options
 - Vetch, **Radish**, forage brassica, teff grass, festolium, millet, grazing corn, **annual ryegrass**, sorghum, **clover**, cereals, feed beet, sugar beet, safflower, sunflower, mung bean, forage collards, turnip rape, turnip, forage rape, kale, phacelia and more
- Alfalfa and grasses for pasture also



New Forage:

- AAC Trueman Alfalfa – branched root
 - 30 years to develop
 - Drought, flooding and resistance


Boost HG Alfalfa

- Low Lignin
- 5-10% increase in fiber digestion
- 3-5% higher crude protein levels

Catapult Timothy

- Aggressive growth, early to mid maturity
- Fast recovery, medium to dark green, likes wet soil = irrigation
- Top yield

	value	irrigated yield	gross	net returns	of wheat's net	residual N	total net returns	percent of wheat's net
								\$ 490.18
FB 9-4 Faba Beans	\$ 9.00	85	\$765	\$522	107%	\$20	\$542	111%
Pea	\$ 7.00	75	\$525	\$330	67%	\$15	\$345	70%
Maple pea	\$ 8.00	75	\$600	\$437	89%	\$15	\$452	92%
Lentil	\$ 12.00	45	\$540	\$414	84%	\$15	\$429	87%
Daniello Hybrid Rye (reduced ergot risk)	\$ 6.00	140	\$840	\$652	133%	0	\$652	133%
Winter wheat	\$ 6.25	125	\$781	\$576	118%	0	\$576	118%
GP Wheat	\$ 6.25	120	\$750	\$554	113%	0	\$554	113%
SY Rowyn CPS (-\$0.25)	\$ 7.25	110	\$798	\$602	123%	0	\$602	123%
HRSW Wheat	\$ 7.50	90	\$675	\$490	100%	0	\$490	100%
Durum Wheat	\$ 8.00	100	\$800	\$612	125%	0	\$612	125%
Barley	\$ 5.00	140	\$700	\$523	107%	0	\$523	107%
Canola	\$ 10.00	65	\$650	\$442	90%	0	\$442	90%
Flax	\$ 13.50	45	\$608	\$468	95%	0	\$468	95%
Corn	\$ 5.50	150	\$825	\$556	113%	0	\$556	113%

 Stamp Seeds	value	southern AB dryland yield	gross	net returns	percent of wheat's net	residual N	total net returns	percent of wheat's net
								\$ 99.60
Lentil	\$ 12.00	15	\$180.00	\$74.13	74%	\$3.95	\$78.08	78%
Pea	\$ 7.00	25	\$175.00	\$15.73	16%	\$3.95	\$19.68	20%
Maple Pea	\$ 8.00	25	\$200.00	\$38.85	34%	\$0.00	\$38.85	39%
Daniello Hybrid Rye	\$ 6.00	50	\$300.00	\$166.35	167%	0	\$166.35	167%
Daniello Hybrid Rye	\$ 6.00	70	\$420.00	\$286.35	288%	0	\$286.35	288%
Winter wheat	\$ 6.25	40	\$250.00	\$125.95	126%	0	\$125.95	126%
SY Rowyn CPS (-\$0.50)	\$ 7.25	33	\$239.25	\$111.20	112%	0	\$111.20	112%
Wheat	\$ 7.50	30	\$225.00	\$99.60	100%	0	\$99.60	100%
Durum Wheat	\$ 8.00	30	\$240.00	\$114.60	115%	0	\$114.60	115%
Barley	\$ 5.00	40	\$200.00	\$82.60	83%	0	\$82.60	83%
Canola	\$ 10.00	20	\$200.00	\$34.71	35%	0	\$34.71	35%
Mustard	\$ 14.00	15	\$210.00	\$98.37	99%	0	\$98.37	99%
Flax	\$ 13.50	15	\$202.50	\$88.66	89%	0	\$88.66	89%

Treatment



Bayer **SeedGrowth**™

- Fungicides & Insecticides
- Polymer coatings -keeps peat inoculant alive up to 30 days on seed
 - New polymer for 2020
- Inoculant
 - NexusBioAg, BASF
- **ATP nutrition – must pre order**
- **QuickRoots – must pre order**
- **Flax – Insure Pulse**



Stamp Seeds

s ahead of time



Early Pay Discounts

- **Dec 15 deadline - can stretch forwards to Thursday Dec 20th (closed on Monday Dec 23)**
 - \$0.50 per bu pre pay (most items)
 - 5% on treatments & inoculant pre pay
 - FCC crop input financing
- Corn, Canola and Soybean discounts lessening as we move to spring
- We can treat in winter

